

# Wireless Temperature Data Logger



## Specifications

**Alarm Type:** Audio High/Low, Low Battery, Calibration Due, Lost Communication Alarms

**Ambient Operating RH Conditions :** 0-95% RH non-condensing (Logger only)

**Ambient Operating Temperature Conditions:** -22.0 to 122.0F (-30.0 to 50.0C)

**Antenna Type:** Internal

**Approvals:** RoHS, FCC Part 15 Compliance, CE

**Battery Backup:** 4 AA Batteries

**Battery Life (Avg):** 6 Months (at 2 Minute Sample Rate in Moderate Conditions)

**Cable Details:** USB - Male Series A plug to 5 pin Male Series B mini plug.

**Cable Length:** 6.0ft

**Calibration Options:** N100 , N300, N400, & N520

**Channels:** CH1: Temperature

**Data Capacity:** 32,000 (16,000 per channel)

**Digital Display:** Yes

**Dimensions:** 1.7 x 4.25 x 4.25in

**Download Type:** Wireless

**Enclosure:** Black; ABS Plastic Clam Shell

**IP Rating:** 21

**Included Accessories:** USB Cable, AC Adapter, 4 AA Batteries, Quick Start Guide

**Mounting Options:** Free Standing or Wall Mount (With Keyhole)

**Note on Alarm Type:** All alarm conditions will generate a pop-up notification in the Dickson WiZARD Software. Text/Email notification available with use of WiZARD ENTERPRISE and SECURE Software.

**Notes:** The WT350 Logger reads temperature and sends data back to the Receiver at regular intervals.

**Output Signal:** 4800 Baud Serial Data

**PC Requirements:** Minimum of 2 GB RAM; Windows XP (with service pack 3) and Windows 7; 2 available USB ports

**Power Cord:** 6 ft

**Power Source:** 120 to 240 VAC, 12 VDC (INTL fittings available)

**Power Source Input:** AC 100-240 0.5V 60/50 Hz

**Power Source Output:** DC 9V, 1A

**Power Status Indicator:** Red/Green/Blue (RGB) LED

**Radio Frequency:** 900 MHz (902 to 928 MHz)

**Remote Sensor Length:** 6 ft

**Remote Sensor Type:** 1 Platinum RTD Probe (Hard-Wired)

**Response Time:** 30 Seconds to 63% of Full Scale

**Sample Interval:** User Selectable (from 10 seconds to 1 hour in 10 second intervals)

**Signal Strength:** Less than 100 mW

**Storage Conditions:** -22.0 to 158.0F (-30.0 to 70.0C)

**Storage Conditions RH:** 0-95% RH non-condensing

**Temperature Accuracy:** +/-0.5F from -148.0 to 350.0F (+/-0.3C from -100.0 to 176.0C)

**Temperature Range:** -148.0 to 350.0F (-100.0 to 176.0C)

**Temperature Sensor Type:** Resistance Temperature Sensor

**Unit Weight:** 3 lbs

**Units/Pkg:** 1

**Wireless Range:** 300 ft

# Calibrations

**N100:** 1-Point NIST Traceable Calibration

**N300:** 3-Point NIST Traceable Calibration

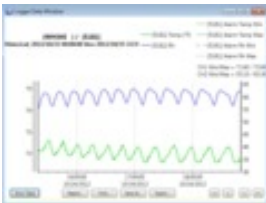
**N400:** 3-Point Ultima NIST A2LA Accredited Calibration

---

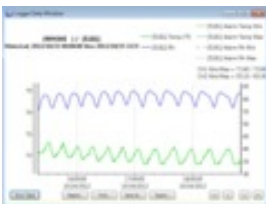
# Accessories



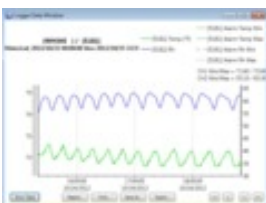
**WA300 - WiZARD2 Wireless Repeater**  
Wireless Repeater



**WR325 - Wireless Receiver and 21CFR11 Secure Software**  
Wireless Receiver and 21CFR11 Secure Software



**WR323 - Wireless Receiver and Software with Email and Text Alerts**  
Wireless Receiver and Software



**WR320 - Wireless Receiver and Software**  
Wireless Receiver and Software

## Accessories



**N530 - Wireless Wizard2 IQOQ Validation Package**  
Wireless Wizard2 IQOQ Validation Package



**R157 - AC Adapter**  
AC Adapter



**R065 - Universal Plug Kit for AC Adapter**  
Set of Three International Power Plugs for AC Adapter



**R013 - Temperature Probe**  
Replacement Bead Wire Temperature Probe



**A202 - Thermocouple Extension**  
K-Thermocouple 100' (30m) Extension Cable

## Accessories



**D617 - Probe Extension**  
K-Thermocouple 10' (3m) Extension Cable



**D611 - Shielded Immersion Probe**  
15' (4.5m) Shielded Thermocouple with 4" (10cm) stainless steel tip



**D605 - Piercing Probe**  
4" (10cm) Thermocouple Handled Piercing Probe



**A340 - Glycol Bottle**  
Bottle of Glycol Solution w/ Septum Close



**A203 - Temperature Probe**  
6" (15cm) High Temperature Immersion Probe