

Wireless Temperature Data Logger



Specifications

Alarm Type: Audio High/Low, Low Battery, Calibration Due, Lost Communication Alarms

Ambient Operating RH Conditions : 0-95% RH non-condensing (Logger only)

Ambient Operating Temperature Conditions: -22.0 to 122.0F (-30.0 to 50.0C)

Antenna Type: Internal

Approvals: RoHS, FCC Part 15 Compliance, CE

Battery Backup: 4 AA Batteries

Battery Life (Avg): 6 Months (at 2 Minute Sample Rate in Moderate Conditions)

Cable Details: USB - Male Series A plug to 5 pin Male Series B mini plug.

Cable Length: 6.0ft

Calibration Options: N100 , N300, N400, & N520

Channels: CH1: Temperature, CH2: Temperature

Data Capacity: 32,000 (16,000 per channel)

Digital Display: Yes

Dimensions: 1.7 x 4.25 x 4.25in

Download Type: Wireless

Enclosure: Black; ABS Plastic Clam Shell

IP Rating: 21

Included Accessories: USB Cable, AC Adapter, 4 AA Batteries, Quick Start Guide

Mounting Options: Free Standing or Wall Mount (With Keyhole)

Note on Alarm Type: All alarm conditions will generate a pop-up notification in the Dickson WiZARD Software. Text/Email notification available with use of WiZARD SECURE Software.

Notes: The WT345 Logger reads temperature and sends data back to the Receiver at regular intervals.

Output Signal: 4800 Baud Serial Data

PC Requirements: Minimum of 2 GB RAM; Windows XP (with service pack 3) and Windows 7; 2 available USB ports

Power Cord: 6 ft

Power Source: 120 to 240 VAC, 12 VDC (INTL fittings available)

Power Source Input: AC 100-240 0.5V 60/50 Hz

Power Source Output: DC 9V, 1A

Power Status Indicator: Red/Green/Blue (RGB) LED

Radio Frequency: 900 MHz (902 to 928 MHz)

Remote Sensor Length: 4

Remote Sensor Type: 1 K T/C with Mini Connector

Response Time: 30 Seconds to 63% of Full Scale

Sample Interval: User Selectable (from 10 seconds to 1 hour in 10 second intervals)

Signal Strength: Less than 100 mW

Storage Conditions: -22.0 to 158.0F (-30.0 to 70.0C)

Storage Conditions RH: 0-95% RH non-condensing

Temperature Accuracy: +/-1.8F from -22.0 to 122.0F (+/-1.0C from -30.0 to 50.0C)

Temperature Range: -300.0 to 2000.0F (-184.0 to 1093.0C)

Temperature Sensor Type: Digital Temperature Sensor

Unit Weight: 3 lbs

Units/Pkg: 1

Wireless Range: 300 ft

Calibrations

N100: 1-Point NIST Traceable Calibration

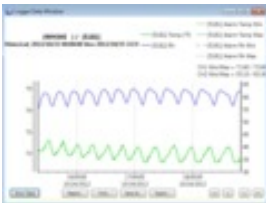
N300: 3-Point NIST Traceable Calibration

N400: 3-Point Ultima NIST A2LA Accredited Calibration

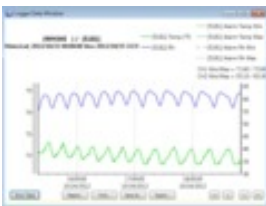
Accessories



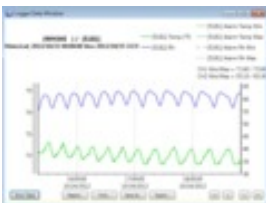
WA300 - WiZARD2 Wireless Repeater
Wireless Repeater



WR325 - Wireless Receiver and 21CFR11 Secure Software
Wireless Receiver and 21CFR11 Secure Software



WR323 - Wireless Receiver and Software with Email and Text Alerts
Wireless Receiver and Software



WR320 - Wireless Receiver and Software
Wireless Receiver and Software

Accessories



N530 - Wireless Wizard2 IQOQ Validation Package

Wireless Wizard2 IQOQ Validation Package



R157 - AC Adapter

AC Adapter



R065 - Universal Plug Kit for AC Adapter

Set of Three International Power Plugs for AC Adapter



R013 - Temperature Probe

Replacement Bead Wire Temperature Probe



A202 - Thermocouple Extension

K-Thermocouple 100' (30m) Extension Cable

Accessories



D617 - Probe Extension
K-Thermocouple 10' (3m) Extension Cable



D611 - Shielded Immersion Probe
15' (4.5m) Shielded Thermocouple with 4" (10cm) stainless steel tip



D605 - Piercing Probe
4" (10cm) Thermocouple Handled Piercing Probe



A340 - Glycol Bottle
Bottle of Glycol Solution w/ Septum Close



A203 - Temperature Probe
6" (15cm) High Temperature Immersion Probe