

# Ethernet Temperature & Humidity Data Logger



## Specifications

**Alarm Type:** High/Low, Low Battery, Calibration Due, Lost Communication

**Ambient Operating RH Conditions :** 5-95% RH non-condensing

**Ambient Operating Temperature Conditions:** -22.0 to 122.0F (-30.0 to 50.0C)

**Approvals:** RoHS, CE

**Battery Backup:** 4 AA Batteries

**Battery Life (Avg):** 1 Month/Back-up Only (at 2 Minute Sample Rate in Moderate Conditions). Logger will save logged data, but will not send data when running on battery power only.

**Cable Details:** For Setup Only: USB - Male Series A plug to 5 pin Male Series B mini plug (6 ft.); Standard Ethernet (7 ft)

**Calibration Options:** N100 , N300, N400, & N520

**Channels:** CH1: Temperature, CH2: Humidity

**Data Capacity:** 32,000 (16,000 per channel)

**Dimensions:** 1.7 x 4.25 x 4.25in

**Download Type:** Ethernet

**Enclosure:** Black; ABS Plastic Clam Shell

**Humidity Accuracy:** +/-2.0% RH from 0.0 to 60.0%; +/-3.0% RH from 60.0 to 95.0%

**Humidity Range:** 0-95% RH non-condensing

**Humidity Sensor Type:** Digital RH Sensor

**IP Rating:** 21

**Included Accessories:** USB Cable, AC Adapter, 4 AA Batteries, Quick Start Guide

**Mounting Options:** Free Standing or Wall Mount (With Keyhole)

**Network Requirements:** If Host PC and Logger are on separate subnets, both Logger and Host PC subnets must be able to see each other. For best results, assign a fixed IP Address to the Host PC. If preferred, logger can be setup using DHCP (contact Dickson Technical Support for

**Note on Alarm Type:** All alarm conditions will generate a pop-up notification in the Dickson WiZARD Software. Text/Email notification available with use of WiZARD SECURE Software.

**Notes:** The WH645 Logger reads temperature and humidity and sends data back to the Receiver at regular intervals.

**PC Requirements:** Minimum of 2 GB RAM; Windows XP (with service pack 3) and Windows 7; 2 available USB ports

**Power Cord:** 6 ft

**Power Source:** 120 to 240 VAC, 12 VDC (INTL fittings available)

**Power Source Input:** AC 100-240 0.5V 60/50 Hz

**Power Source Output:** DC 9V, 1A

**Power Status Indicator:** Red/Green/Blue (RGB) LED

**Remote Probe Dimensions :** Houses thermistor and RH sensor in polycarbonate plastic; 1.5" x 0.5" (1.25cm x 4.5cm)

**Remote Sensor Length:** 10 ft (optional)

**Remote Sensor Type:** 1 Field Replaceable Digital Temperature/RH Sensor

**Response Time:** 30 Seconds to 63% of Full Scale

**Sample Interval:** User Selectable (from 10 seconds to 1 hour in 10 second intervals)

**Software Options:** W2 Version 1.2.0.11 or higher

**Storage Conditions:** -22.0 to 158.0F (-30.0 to 70.0C)

**Storage Conditions RH:** 0-95% RH non-condensing

**Temperature Accuracy:** +/-0.8F from 20.0 to 122.0F 1.8F Remaining (+/-0.44C from -7.0 to 50.0C 1.0C Remaining)

**Temperature Range:** -22.0 to 185.0F (-28.0 to 85.0C)

**Temperature Sensor Type:** Field Replaceable

**Unit Weight:** 3 lbs

**Units/Pkg:** 1

## Calibrations

**N100:** 1-Point NIST Traceable Calibration

**N300:** 3-Point NIST Traceable Calibration

**N400:** 3-Point Ultima NIST A2LA Accredited Calibration

---

## Accessories



### **A868 - Sensor Dust Filter**

Sensor Dust Filter - prolong the life of your sensor.



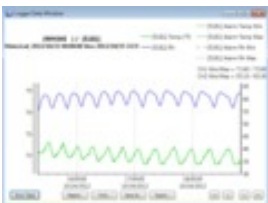
### **R200 - Replaceable Temperature/Humidity Sensor**

Angled Temperature/Humidity Replaceable Sensor



### **WA300 - WiZARD2 Wireless Repeater**

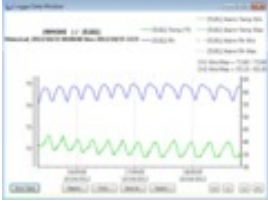
Wireless Repeater



### **SW502 - WiZARD2 Wireless 21CFR11 Secure Software**

WiZARD2 Wireless 21CFR11 Secure Software (Software Only)

## Accessories



**SW501 - WiZARD2 Wireless Software with Email and Text Alerts**  
WiZARD2 Wireless Software with Email and Text Alerts (Software Only)



**N530 - Wireless Wizard2 IQOQ Validation Package**  
Wireless Wizard2 IQOQ Validation Package



**R157 - AC Adapter**  
AC Adapter